

THE KNOWLEDGE FOR CHANGE GLOBAL CONSORTIUM



UNESCO CHAIR IN COMMUNITY-BASED
RESEARCH AND SOCIAL RESPONSIBILITY IN
HIGHER EDUCATION

NOVEMBER 2021

© 2021 UNESCO Chair in Community-Based Research and Social Responsibility in Higher Education



This is an open access title distributed under the terms of the CC BY-NC 4.0 license, which permits any non-commercial use, distribution, and reproduction in any medium, provided the original author(s) and source are credited. Further information and the complete license text can be found at <https://creativecommons.org/licenses/by-nc/4.0/>. The terms of the CC license apply only to the original material. The use of material from other sources (indicated by a reference) such as diagrams, illustrations, photos and text samples may require further permission from the respective copyright holder

To obtain permission for uses beyond those outlined in the Creative Commons licenses, please contact PRIA Library (library@pria.org)

For more information about the UNESCO Chair visit: www.unescochair-cbrsr.org

First Edition: November 4, 2021

Written by: Niharika Kaul, Participatory Research in Asia

Edited by: Suriani Dzulkifli, University of Victoria

Cover by: Niharika Kaul, Participatory Research in Asia

Published at Participatory Research in Asia

Address: 42, Tughlakabad Institutional Area, New Delhi, 110062, India

CONTENTS

INTRODUCTION	4
BIRTH OF THE KNOWLEDGE FOR CHANGE GLOBAL CONSORTIUM	5
THE BIG PICTURE	6
ASIA	7
LATIN AMERICA	12
AFRICA	15
NORTH AMERICA	18
EUROPE	21
ABOUT THE UNESCO CHAIR	24
ABOUT THE UNESCO CO-CHAIRS	24

INTRODUCTION

Our UNESCO Chair was created in 2012 at the request of UNESCO with whom we had worked on the 2009 World Conference on Higher Education. During the first five years of our work as Chairs, we carried out two major international research projects to gain insights into the 'state-of-the-art' around the world in the field of community-university research partnerships and training for community-based participatory research. As a result of these studies, which can be found as free downloadable books in our website (www.unescochair-cbrsr.org), we learned that young people working in community sectors as well as in universities had a difficult time accessing learning opportunities that provided insights into the complexities of this kind of work. University courses most often lacked engagement in community. Community-led courses often lacked the theoretical aspects of the work.

After consultations with our partners in various parts of the world, we decided to design a pedagogical model that could offer opportunities for the next generation of young people to learn both the theories and practices of community-based participatory research. We named this the Knowledge for Change (K4C) Global Consortium for the Training of Community-Based Participatory Research. At the heart of the consortium, we placed the K4C Hub. A K4C Hub is a formal partnership between a community organisation and a higher education institution whereby the partners agree to work together to provide learning opportunities to both community workers and university students. The hubs are aligned as well with one or more of the United Nations Sustainable Development Goals.

Over the years since the Global Consortium was launched, potential hubs have indicated their interest to our Chair. Upon working out their own MoUs between community and academic partners, the hubs have nominated up to five mentors to take the Mentor Training Programme (MTP) that is offered as a 21-week on-line and face-to-face basis (COVID permitting). Upon completion of the MTP, the hubs are free to begin teaching their own courses in their regions. We offer two cohorts of the MTP each year.

We are delighted to share information on the hubs that currently form the heart of the K4C Global Consortium. We invite anyone interested in exploring the creation of a K4C hub in their part of the world to contact our Chair.

Rajesh Tandon and Budd Hall, Co-Chairs, UNESCO Chair in Community-Based Research and Social Responsibility in Higher Education

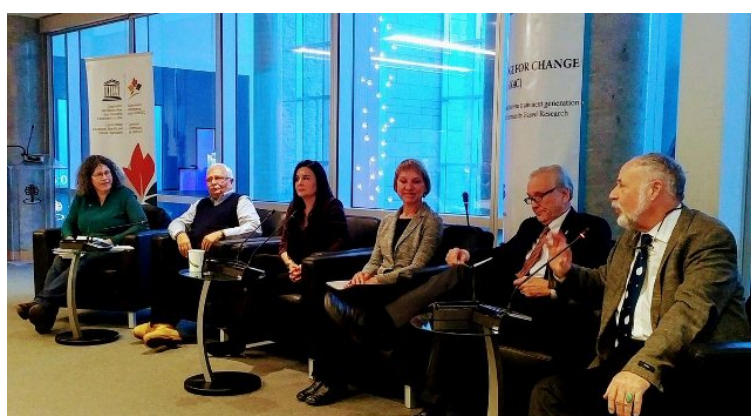
BIRTH OF THE KNOWLEDGE FOR CHANGE GLOBAL CONSORTIUM



Canada, Indonesia, Italy, Spain and Uganda.

The UNESCO Chair's Knowledge for Change (K4C) Global Consortium witnessed a grand launch on November 13, 2017 at the National University of Educational Planning & Administration (NUEPA), New Delhi. The launch event, which was hosted in collaboration with NUEPA, witnessed over fifty participants joining the event, which included colleagues in academia, civil society practitioners, faculty and students. Joining the discussion were also colleagues from all over the world, including UK,

The inaugural address was delivered by Mr. Shigeru Aoyagi, Director, UNESCO New Delhi who congratulated the Chair for starting such a path-breaking initiative for training next generation researchers in community-based research, and also complimented the Chair as being *'the most important and active chair in the world'*. One of the key speakers at the event was Dr. S. K. Pandey, Vice-Chancellor, Pandit Ravi Shankar Shukla University, who emphasised the importance of universities being connected to the society, to remain relevant in the future. The launch event closed with an address by Prof. N. V. Varghese, Vice-Chancellor, NUEPA, who emphasised the importance of societal engagement in research.



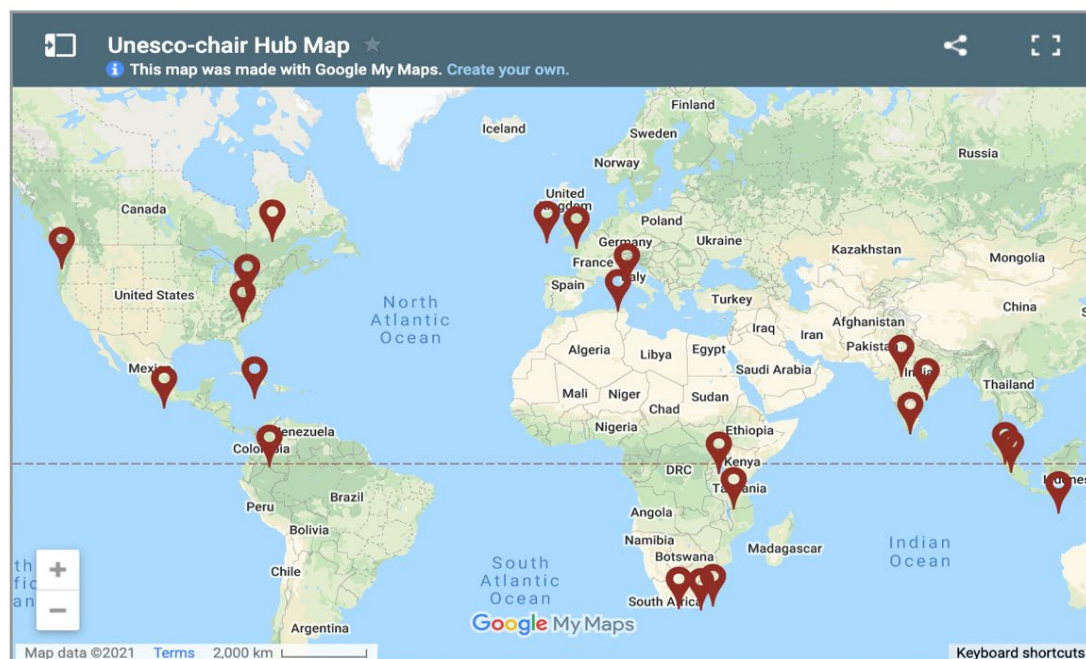
The Canadian Commission for UNESCO and the University of Victoria hosted the Canadian launch of the K4C Global Consortium in Ottawa, Ontario on December 14, 2017. The event witnessed a gathering of Chair's partners and colleagues, and stimulating conversations on the relevance of community-based research. Among the attendees were Dr. Budd Hall & Dr. Rajesh Tandon (UNESCO Co-Chairs); Dr. Sebastian Goupil, Secretary General of the Canadian Commission of UNESCO and other colleagues from the commission; Dr. Joanna Ochocka, Vice-Chair, CBRC Canada; Dr. Martin Taylor, Executive Director, Canadian Research Data Centre Network; Dr. Crystal Tremblay, Research Director, UNESCO Chair and Walter Lepore, Project Director, UNESCO Chair among others.

The first Cohort of the K4C Global Consortium started in 2018, with the initiation of the Mentor Training Programme (MTP), leading to the training of mentors from seven countries

around the world. Today the K4C Global Consortium has spread its wings across 14 countries with 22 locally-based hubs, and is in its seventh cohort of the MTP.

THE BIG PICTURE

Knowledge for Change Consortium for Training in Community-Based Participatory Research



Mentors	Publications	Courses	Research Projects	Trainings/ Conferences
108	38	27	45	56

ASIA

Universiti Sains Malaysia (USM) Hub

Location: Penang, Malaysia

University Partner: Universiti Sains Malaysia (USM)

Community Partner: APUCEN (Asia Pacific University-Community Engagement Network)

Year of creation: 2018

Hub Coordinator: Professor Dato' Dr. Aileen Tan Shau Hwai (aileen@usm.my)

Mentors	Research Projects
3	4

The USM Hub was established in line with USM core responsibilities by upholding its social responsibility reform agenda as a public higher education institution and being recognised by the Ministry of Higher Education as the first APEX (Accelerated Programme of Excellence) university in Malaysia. Beyond higher education, the Hub leverages on the USM prowess to instigate positive change to a wider reach from social and economic progresses in accordance with the Sustainable Development Goals (SDGs). USM's APEX seven-thrusts envisioned that society-centric agenda, especially the bottom billions, are being translated with social responsibility actions, and university-community engagement (UCE) projects to yield meaningful impacts to the society.



The Hub aims to infuse and establish a sustainable community-based participatory research (CBPR)-UCE model with strategic community partner(s) as the organisational culture within USM core responsibilities, beyond higher education. With regard to research projects, one of the Hub projects is "Co-Construction of Catchment Ecosystem Knowledge of the Semang Kensiu, Ulu Legong, Kedah", centering on co-constructing knowledge of river value appreciation of the Semang Kensiu community for the young and future generations. Another initiative of the Hub is "Program Sentuhan Naluri" which aims to work with people who use drugs (PWUDs) in prisons before their release into the community, that had to be deferred due to the strict lockdown imposed by the Prison Department. Project "BrainBee@USM" is another fascinating endeavour of the Hub, involving students/teachers at the primary/secondary schools in Malaysia. Overall, the USM Hub is working towards serving as the platform to promote conversations on the co-creation of knowledge and developing CBPR into teaching and learning, as well advocacy.

Read more about this Hub here:

<https://www.unescochair-cbrsr.org/malaysia-k4c-hub/>

Mizan Hub

Location: Nilai, Negeri Sembilan, Malaysia

University Partner: Universiti Sains Islam Malaysia (USIM)

Community Partners: Malay Agricultural Settlement (MAS) of Kampong Bharu, Kuala Lumpur, Malaysia and the Malaysian Youth Council, Kuala Lumpur

Year of creation: 2019

Hub Coordinator: Dr. Mahazan Abdul Mutalib (mahazanusim@gmail.com)

Mentors	Publications	Research Projects	Trainings/Conferences
6	1	5	2



Mizan Hub was officially established in 2019 when two academics of Mizan Research Centre (MRC), Universiti Sains Islam Malaysia (USIM) along with a representative of the Malay Agricultural Settlement (MAS) of

Kampong Bharu, Kuala Lumpur, Malaysia completed the Mentor Training Programme (MTP), organised by the UNESCO Chair. In 2021, two more academics of USIM and the President of Malaysia Youth Council joined the MTP representing Mizan Hub. The Mizan Hub has incorporated the methodology of community engagement, especially Community-Based Participatory Research mainly in research and academics.

The Hub mentors initiated a project for “Engagement with Malaysian Human Rights Commission (SUHAKAM), Malaysia” for presenting research findings to SUHAKAM commissioners and officers on Indigenous peoples position in Malaysia. Another stimulating project of the Hub is “Tracking with Orang Asli guides – researching Orang Asli perspectives on customary land and law”. Here the Orang Huluk, who are tourist guides, shared their experience and views on their life and livelihood living within National Park (in a casual conversation), based on which a paper was written by the Hub mentors. The Hub mentors have also conducted several focus group discussions and round table dialogues with community leaders and academics on several pressing issues.

Read more about this Hub here:

<https://www.unescochair-cbrsr.org/malaysia-k4c-hub-mizan/>

Jaipur Hub

Location: Jaipur, Rajasthan, India

University Partner: Manipal University Jaipur (MUJ)

Community Partners: Gram Panchayats, Municipalities, Jain Social Group (Central Sanstha), Mahila Housing Trust (MHT), Chahat (Women welfare foundation), NSS and PRIA

Year of creation: 2018

Hub Coordinator: Dr. Madhura Yadav (madhura.yadav@jaipur.manipal.edu)

Mentors	Publications	Courses	Research Projects	Trainings/Conferences
4	3	2	1	1



The Jaipur Hub aims to develop an understanding of multidisciplinary and interdisciplinary learning of CBPR, to make students learn and understand the importance of co-creation of knowledge, to build partnerships of mutual respect with academic stakeholders for collaborative research, and to be able to disseminate CBPR methods to a variety of audiences to facilitate quality education.

The Hub mentors have been engaged with integrating CBPR in the academic courses at the university. For pursuing these courses, students have conducted field studies as part of the course modules on issues of sanitation, financial transactions, air pollution, Pub-G addiction among teenagers and fines-imposed traffic rule violators among others. The Hub mentors have also conducted conferences, seminars and prepared knowledge resources on issues related to community-university engagement and the role of higher education institutions in promoting labour mobility.

Read more about this Hub here:

<https://www.unescochair-cbrsr.org/india-k4c-hub/>

Sangwari Hub

Location: Raipur, Chhattisgarh, India

University Partner: Pandit Ravi Shankar Shukla University

Community Partners: Chhattisgarh State Planning Commission and Participatory Research in Asia (PRIA)

Year of creation: 2018

Hub Coordinator: Dr. Reeta Venugopal (reetavenugopal@yahoo.com)

Mentors	Publications	Courses	Research Projects	Trainings/Conferences
8	1	2	3	10



The name “Sangwari” means friend in Chhattisgarhi dialect in the region. This title of the hub signifies the concept of CBPR which also entails to go hand-in-hand with academia and community. Sangwari CBPR Hub, was constituted under a tripartite agreement between the State Planning Commission, PRIA and Pt. Ravishankar Shukla

University. The Hub is located at Pt. Ravishankar Shukla University in Raipur. The objective of the Hub is to co-create knowledge with the community and academia, focussing on issues related to United Nations Sustainable Development Goal 5 (UN SDG 5).

The Sangwari CBPR Hub seeks new ways of learning and creating conditions needed for innovative models of research and training programmes in CBR to flourish. It offers a variety of means to enhance individual & institutional research training capacities. The Hub mentors have contributed to the learning materials for the CBPR courses and prepared several field reports on issues related to UNSDGs 4 and 5. Students studying these courses have also worked on issues related to awareness and benefits to women and child health care services provided by Anganwadi centres, sexual harassment, role of women in Panchayati Raj and effect of skill development scheme on economic development of women. The Hub mentors also conduct conferences, seminars, trainings, workshops, symposium and awareness programme on Community-Based Participatory Research, with special focus on various SDGs.

Read more about this Hub here: <https://www.unescochair-cbrsr.org/india-k4c-hub-raipur/>

CHRIST University Hub

Location: Bangalore, Karnataka, India

University Partner: CHRIST University

Community Partners: Centre for Social Action (CSA), Chetana Women and Community Development Multipurpose Souhardha Co-Operative Ltd, Yelachamana Halli, Hosakote. **Year of creation:** 2020

Hub Coordinator: Dr. Victor Paul (hod.socialworksociology@christuniversity.in)

Mentors	Courses	Research Projects
4	2	1

The CHRIST University Hub uses CBPR methodologies within teaching and research to address issues related to education (UNSDG 4), gender equality (UNSDG 5), clean water and sanitation (UNSDG 6), as well as working through partnerships (UNSDG 17). The Hub encourages, trains and supports the faculty and students to take up innovative and socially responsible programmes and activities. CSA of CHRIST University believes in bringing about a positive change in the community.



Further, the university has MoUs with several international universities and developmental agencies from North America, Europe, Australia, Asia and Southeast Asia and Africa for academics, research and most important projects for realising SDGs. The Hub has collaborated with several ministries of the Indian government and local governments for consultancy and community

development projects. The Hub has been actively engaged with the Unnat Bharat Abhiyan programme of the Government of India to link certain villages with Government Schemes. The Hub mentors conducted a study on “Analysis of Women Participation in Family, Rural Community and Local Governance” as part of the Mentor Training Programme. The mentors continue to use CBPR in teaching and learning, as well as through research and service at the Hub.

Read more about this Hub here: <https://www.unescochair-cbrsr.org/india-k4c-hub-christ-university/>

UIN Sunan Ampel Hub (UINSA)

Location: Surabaya, Indonesia

University Partner: Universitas Islam Negeri Sunan Ampel (UINSA)

Community Partners: LPPM-Center for Community-Based Research and Development of UIN Sunan Ampel Surabaya LBH UINSA, Pusat Studi Lingkungan dan Mitigasi Bencana, Center for Peace Building, Pusat Kajian Pedesaan dan Politik Lokal, (Pusat Perlindungan Kekerasan Perempuan dan Anak/ POLDA JATIM)

Year of creation: 2018

Hub Coordinator: Dr. Nabiela Naili (naily@uinsby.ac.id)

Mentors	Research Projects	Trainings/Conferences
11	1	10



The UINSA Hub is based in Surabaya, Indonesia and aims to integrate community-university engagement into teaching, research and service at the university. One of the strategies within the K4C UINSA is to widen the promotion of CBPR. The Ministry of Religious Affairs (MORA) helps the hub with the

management and facilitation of the trainings or short courses for the lecturers of PTKI (State Islamic Universities or Institutes) all across Indonesia. Hence the Hub mentors have actively facilitated several trainings in relation to CBPR.

The Hub mentors also conduct refreshment trainings for lecturers of UINSA. This training is the preparation for the Dosen Pembimbing Lapangan (DPL) or lecturers who assist in Kuliah Kerja Nyata (KKN). KKN can be understood as yearly students' university community engagement internship work. This is an annual programme of UINSA Surabaya. This has been mandated as one of the missions of the university to be engaged with the community, and is in line with the national policy that promotes the Tri Dharma consisting of teaching-learning, research, and service or community engagement. Usually the students go to villages or urban areas to co-create knowledge with the community over a period of a month. In this regard, UINSA has been actively using approaches such as PAR (participatory action research), ABCD (asset-based community development), and CBR (community-based research).

Read more about this Hub here:

<https://www.unescochair-cbrsr.org/indonesia-k4c-hub/>

LATIN AMERICA

Cuba Hub

Location: Santiago de Cuba, Cuba

University Partner: Universidad de Oriente

Community Partners: La Dirección Provincial de Cultura de Santiago de Cuba, El Centro Provincial de Casas de Cultura de Santiago de Cuba, El Centro Provincial del Libro y la Literatura

Year of creation: 2018

Hub Coordinator: Dr. Mercedes Cuesta Dublín (mercedesc@uo.edu.cu)

Mentors	Research Projects
4	1

The Hub promotes strengthening community participation based on a theoretical foundation of socio-cultural values of the community, where the research is being carried out. The problems for research are identified based on contextual, socio-cultural realities of the local communities to bring about transformative change. Trainings are designed by Hub mentors using CBPR methodologies, on issues of cultural identity, health, education and related issues.

(Finalmente ellas incluyen potenciar la inserción de los gestores socioculturales en formación en una experiencia investigativa real que dé respuesta a problemáticas socioculturales del territorio como eje formativo de la carrera.)

Read more about this Hub here:

<https://www.unescochair-cbrsr.org/cuba-k4c-hub/>

Investigación Acción para la Paz (IAPaz) Hub

Location: Bogota and Ibagué, Colombia

University Partners: Universidad de los Andes and Universidad de Ibagué

Community Partners: Fundación CINDE (Centro Internacional de Educación y Desarrollo Humano)

Year of creation: 2018

Hub Coordinator: Dr. Irma Alicia Flores Hinojos (ia.flores24@uniandes.edu.co)

Mentors	Courses	Research Projects	Trainings/Conferences
6	2	6	1



In Colombia and Latin America there is a long tradition in the field of participatory action research (CBPR) and pedagogical proposals to generate curricula for training researchers, which is why the design of the courses at the Hub are based on the pedagogical principles of critical pedagogy and socio-constructivism mainly, retaking postulates such as Freire's (2005), who raised education as a practice of freedom and social change, and highlighted the

political and ethical character of the educational process. The Hub's courses are also based on Fals Borda's ideas about the education process, referring to the student-centred education and the philosophy of "learning by doing".

The IAPaz Hub Colombia is guided by UNSDG 16 (promote peaceful and just societies for sustainable development, provide access to justice for all, and build effective, accountable and just institutions at all levels), creating conditions of possibility to facilitate critical awareness and autonomy towards multiple re-existences. In the case of the IAPaz Hub, the academic structure of the two universities is designed in an integrated manner (Universidad de los Andes and Universidad de Ibagué), that allows the courses to respond to the statements of both universities along with the training structure of their community partner, Fundación CINDE. The hub mentors have conducted research and trainings on a number of issues, including creating academic curricula for promoting social peace, curricula for promoting diversity and peace processes within communities through collective reflection-action processes, among others.

Read more about this Hub here:

<https://www.unescochair-cbrsr.org/columbia-k4c-hub/>

Mexico Hub

Location: Mexico City, Mexico

University Partner: Universidad Iberoamericana

Community Partner: Pro Niños de la Calle, IAP

Year of creation: 2020

Hub Coordinator: Ms. Rocío Cos Garduño (rocio.cos@ibero.mx)

Mentors

4

The Mexico Hub is based at Universidad Iberoamericana, Mexico City and promotes Community-Based Participatory Research through education, systematisation and dissemination in Mexico, from an open network perspective and with a view to positioning this type of research in Mexico as a real alternative for knowledge generation. The Hub's work will be organised in axes: Education and Formative Processes, Systematisation and Networking. Each axis must be intrinsically related to the others, so that the work in the Hub can be articulated as a network that walks together and builds community processes.



Education and Formative Processes: it is intended to work with diverse groups, so that a community that works in terms of CBPR is formed; with community partners, academics, students and others who may be interested in the processes that take place in the Hub.

Systematisation: the great work that exists in Mexico in methodologies and processes that could well be CBPR, but that have not necessarily been identified as such, is recognised. That is why it is proposed to work on the systematisation of CBPR processes in order to publicise and identify meeting points with these similar processes.

Networking: the axis of linkage would be working on communicating what is being worked on, the projection that the Hub mentors have, and the initiatives to which the different communities and people can be added.

As a new hub, the mentors are including the CBPR principles in the formative processes of the academic members who would be leading some community work that are scheduled to start in January 2022. These academic activities are planned to include students from all the programmes.

Read more about this Hub here:

<https://www.unescochair-cbrsr.org/mexico-k4c-hub/>

AFRICA

South African Hub-North

Location: Potchefstroom and Bloemfontein, South Africa

University Partners: North-West University and University of Free State

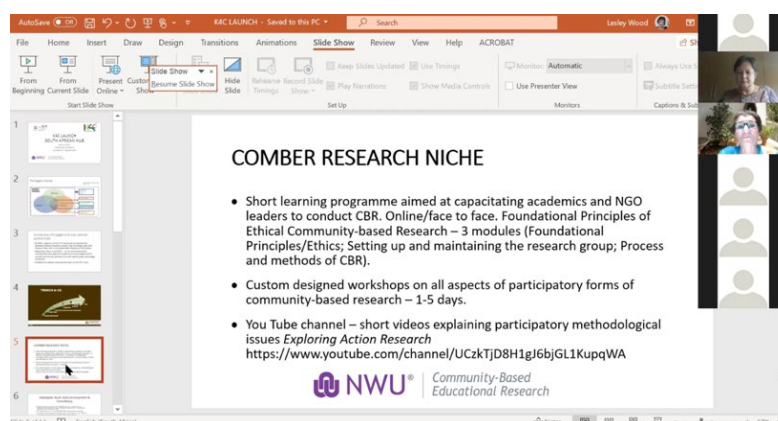
Community Partners: Gatelepele Youth Skills Development, Bloemshelter, Bafenyi Trust, Early Childhood Care and Education and Community-based Educational Research (COMBER)

Year of creation: 2019

Hub Coordinator: Dr. Lesley Wood (Lesley.wood@nwu.ac.za)

Mentors	Publications	Courses	Research Projects	Trainings/Conferences
5	17	1	7	5

The Hub is housed in the Directorate for Sustainability and Community Impact headed by Ms. Bibi Bouwman. The main aim of the hub is to support community-based research aimed at the development of methodologies, theory, and practice based on a holistic, systematic, and integrated



approach to the promotion of the UN Sustainable Development Goals, particularly, but not exclusively, UNSDGs 1, 3, 4, 10, & 17. The knowledge generated will contribute to social transformation applicable to a local as well as a global scale. It aims to partner with the community to develop a framework that enables an improved systematic and critical understanding of how multiple systems interact to have positive impacts on the learning and development of various forms of community, and to develop process-oriented, evidence-based strategies to enhance the learning and development of diverse communities, particularly those recognised to be most vulnerable.

In addition, the hub aims to develop holistic integrated strategies to facilitate working and inclusive spaces across all levels of interrelatedness in communities, to build on the expertise of academics involved to enable them to practise community-based research and to take the research to scale, whereby communities adopt and adapt processes that are informed by the knowledge generated by this hub. For conducting research, the Hub mentors are actively engaged in producing locally relevant actionable knowledge which can bring about social change, through Community-Based Educational Research (COMBER).

Read more about this Hub here:

<https://www.unescochair-cbrsr.org/south-africa-k4c-hub/>

Durban Hub

Location: Durban, South Africa

University Partner: Durban University of Technology

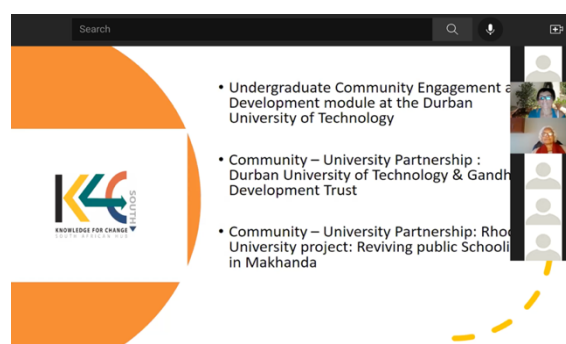
Community Partner: St Monica's Child and Youth Care Centre and Gandhi Development Trust

Year of creation: 2018

Hub Coordinator: Dr. Darren Brendan Lortan (dlortan@dut.ac.za)

Mentors	Courses	Research Projects	Trainings/Conferences
3	6	1	2

The Durban Hub is a partnership between the Durban University of Technology and its community partners. The three mentors trained through the MTP are engaged in integrating CBPR in their teaching, research and service. They have conducted a number of CBPR Courses in offline and online modes, and conducted research on several issues using CBPR methodology. They are currently involved with the "Bridging Knowledge Cultures" project for comparing and understanding ways of knowledge production and communication within academic institutions and the community.



Read more about this Hub here:

<https://www.unescochair-cbrsr.org/south-africa-k4c-hub-durban/>

Rhodes U Hub

Location: Makhanda, South Africa

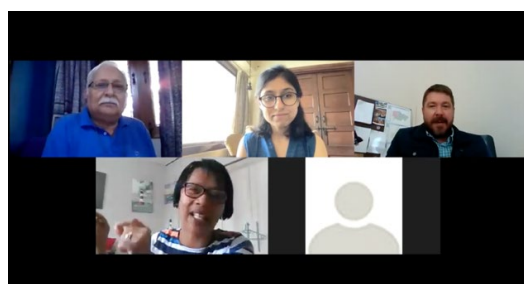
University Partner: Rhodes University

Community Partner: The Learning Trust

Year of creation: 2021

Hub Coordinator: Dr. Rene Oosthuizen (r.oosthuizen@ru.ac.za)

Mentors
4



The Rhodes Hub has newly become part of the K4C Global Consortium in 2021. The Hub mentors had collaborated and conducted an interesting study using CBPR during the MTP, on the impact of the COVID pandemic on marginalised and traditional communities in Makhanda, South Africa, with

specific reference to food security. The Hub is launching its first CBPR course in November 2021 and are planning on other next steps to use CBPR for co-producing knowledge in their community in 2022.

Read more about this Hub here:

<https://www.unescochair-cbrsr.org/south-africa-k4c-hub-rhodes/>

Gulu Hub

Location: Gulu, Uganda

University Partner: Gulu University

Community Partner: Partners for Community Development

Year of creation: 2019

Hub Coordinator: Dr. David Monk (capelton15@gmail.com)

Mentors	Publications	Courses	Research Projects
6	1	1	3

The Gulu Hub in Uganda is a partnership between Gulu University and their community partner to carry out CBPR in their academic structures. Mentors at Gulu Hub have been active in using arts-based methods with youth groups among others, to work on several issues with special focus on climate change and environment.

They also managed to develop the Gulu University Community Engagement Policy (GUCE) 2020, which mandates integrating community engaged research across the university. The hub plays a role in integrating this policy in teaching and research. The Hub mentors also developed a close partnership with the Faculty of Medicine Pharm Biotrac program, which focuses on preserving biodiversity, Indigenous knowledge, and herbal medicine and is deeply embedded in the community.



Read more about this Hub here:

<https://www.unescochair-cbrsr.org/gulu-hub-uganda/>

Nyerere Hub

Location: Arusha, Tanzania

University Partner: Nelson Mandela African Institution of Science and Technology

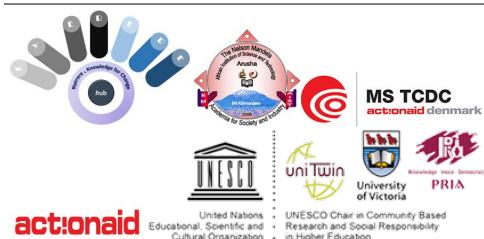
Community Partner: ActionAid Tanzania (AATZ), MS Training Centre for Development Cooperation (MS TCDC)

Year of creation: 2019

Hub Coordinator: Dr. Mwemezi J. Rwiza (mwemezi.rwiza@nm-aist.ac.tz)

Mentors	Research Projects	Trainings/Conferences
3	1	1

Nyerere Hub is a partnership between the Nelson Mandela Institution of Science and Technology, ActionAid Tanzania, and the MS Training Centre for Development Cooperation.



The goal of the Hub is to build community-based participatory research capacity to address the UN SDGs. This is done by designing and conducting educational programs in order to develop research capacities for the co-creation of knowledge through collective action by practitioners, community-based researchers, community groups and academics.

In June 2020, the Nyerere Hub in collaboration with the Gulu Hub (Uganda) conducted a webinar titled, East African Countries Response Strategies to COVID-19: Impacts and Prospects for Community-Based Participatory Research. The webinar sought to answer the following critical questions: How has COVID-19 impacted education and learning? What are the implications for youth and community? What is next by way of how education is going to be organised policy-wise going forward? The Hub is also involved with the “Bridging Knowledge Cultures” project with some other hubs of the K4C Global Consortium.

Read more about this Hub here:

<https://www.unescochair-cbrsr.org/nyerere-k4c-hub/>

NORTH AMERICA

Salish Sea Hub

Location: Traditional territories of the Coast Salish and Straits Salish Territories of the lək̓ʷəŋən and W̱SÁNEĆ Peoples

University Partner: University of Victoria

Community Partner: Victoria Native Friendship Centre (VNFC) and Victoria Foundation

Year of creation: 2018

Hub Coordinator: Dr. Crystal Tremblay (crystalt@uvic.ca)

Mentors	Publications	Courses	Research Projects
6	2	1	7

The Salish Sea is the intricate network of coastal waterways that includes those surrounding Vancouver Island and the southwestern portion of mainland British Columbia (BC). This term was selected for the name of the Hub not just to reflect the geographic desire to focus on support in this area of the province, but also as a reflection of the intricate ways that the Hub will extend into communities. The Salish Sea Hub is a Community-Based Participatory Research (CBPR) hub, grounded in Indigenous ways of viewing the world, and focused on



bringing research out of academia and into communities. It is based at the University of Victoria (Faculty of Social Sciences and the Office of the Vice President Research) in partnership with community stakeholders.

It aims to deliver innovative and experiential CBPR training and research that respond to and create action for addressing the United Nations Sustainable

Development Goals and Declaration on the Rights of Indigenous Peoples that relate to identified issues and priorities of its community partners, as well as to serve local priorities of the community. It also aims to create/expand an academic-practitioner learning environment and long-lasting relationships with, and impacts in, local communities. Apart from introducing CBPR courses and facilitating student-led projects, the hub also offers graduate scholarships; one or more scholarships of at least \$1,000 each are awarded to graduate students in the Geography department pursuing or conducting community-based research that addresses any of the 46 articles outlined in the [UN Declaration on the Rights of Indigenous Peoples](#) (UN DRIP) and/or any of the 17 Sustainable Development Goals.

Read more about this Hub here:

<https://www.unescochair-cbrsr.org/canada-k4c-hub/>

Tkaronto Hub

Location: Toronto, Ontario, Canada

University Partner: University of Toronto

Community Partner: Toronto Centre for Community Learning and Development, and Ontario Council for International Cooperation

Year of creation: 2019

Hub Coordinator: Ms. Karen Villanueva-Paez (karen@tcclld.org)

Mentors	Courses	Research Projects
4	2	2

Following conversations about the importance of community expertise and to ensure that research are also driven by community needs, K4C Tkaronto Hub was co-founded in the summer of 2019 by the [Centre for Critical Development Studies at UTSC](#), OISE at the University of Toronto, community partners, [Toronto Centre for Community Learning & Development \(TCCLD\)](#), and [Ontario Council for International Cooperation \(OCIC\)](#).

As of March 2020, mentors from these organisations have been trained and certified by the K4C Global Consortium to become resources in future community-based participatory research projects. They have also been deeply embedded in the pedagogy of the cluster of courses that form the core of the Community Knowledge Learning Hub, an experiential learning project

funded by the Provost at the University of Toronto. One of the interesting initiatives that the Hub mentors have been engaged with is the Knowledge Equity Lab, an inclusive, trans-disciplinary space that seeks to challenge multiple forms of exclusion within the highly unequal structure of knowledge production and exchange.

Read more about this Hub here:

<https://www.unescochair-cbrsr.org/tkaronto-k4c-hub/>

Laval Hub

Location: Quebec City, Quebec, Canada

University Partner: Université Laval

Community Partner: Centre de coopération internationale en santé et développement, Canada

Year of creation: 2020

Hub Coordinator: Ms. Valérie Desgroseilliers (valerie.desgroseilliers.1@ulaval.ca)

Mentors
3

The Laval Hub was led by (Late) Dr. Florence Piron, and is now carrying forward CBPR approaches in its academic structure and community-based projects. Dr. Piron was a world-renowned anthropologist and ethicist. She was a Professor at Université Laval and taught critical thinking there through multidisciplinary courses on ethics, democracy and living together. She was also Founding-President of the Science and Common Good Association and of the Science and Knowledge Access Store at Université Laval. During the Mentor Training Programme, one of the Hub mentors conducted an interesting case study on the perspectives of pregnant women with a precarious status in Quebec and the health-related issues that are affecting them. Another mentor did a case study on immigrant women and the barriers they face in Quebec.

Read more about this Hub here:

<https://www.unescochair-cbrsr.org/canada-k4c-hub-laval-university/>

West Virginia University Hub

Location: Morgantown, West Virginia, USA

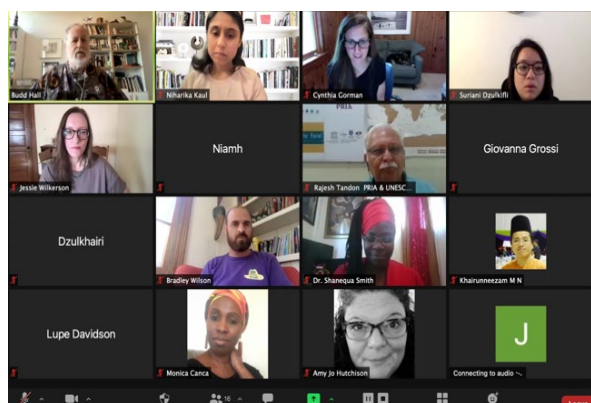
University Partner: West Virginia University

Community Partner: WVU Centre for Resilient Communities, West Virginia

Year of creation: 2021

Hub Coordinator: Dr. Shanequa Smith (drshanequasmith@gmail.com)

Mentors
6



The WVU Hub is located at West Virginia University, West Virginia in the United States of America. This Hub was formed in 2021 amidst the COVID-19 Pandemic. Among the Hub mentors, Jessie Wilkerson's case study that she completed as part of the Mentor Training Programme reflects the potential that this Hub has in using CBPR methodologies in partnership with the community to bring about social change.

Jessie's study strings together the perspectives of youth in the community through an oral history piece to compliment the 50th memorial in Logan County, West Virginia, where the West Virginia and Regional History Centre was digitising the papers of Governor Arch Moore which pertained to the event. This study was conducted in collaboration with the Appalachian Centre for Equality, a programme of the American Friends Service Committee in southern West Virginia.

The Hub mentors have some plans of conducting CBPR based projects in the region in 2022.

Read more about this Hub here:

<https://www.unescochair-cbrsr.org/u-s-a-k4c-hub-university-of-west-virginia/>

EUROPE

UL Engage-University of Limerick Hub

Location: Limerick, Ireland

University Partner: University of Limerick

Community Partners: Limerick City and County Council, Limerick City Community Development Project and over 20 local community groups

Year of creation: 2019

Hub Coordinator: Dr. Maura Adshead (maura.adshead@ul.ie)

Mentors	Courses
8	3

The UL Engage-University of Limerick Hub is playing a leading role in promoting civic engagement in Irish higher education and is committed to working in line with the values of Campus Engage. The re-imagining of university engagement supported by the K4C Hub offers a 'life cycle approach' to our existing engaged activities– in schools outreach, university access initiatives, community-based learning and engaged research (ABC to PhD!) – recognising that university investment in one area may ultimately deliver benefits to another, and over a longer timeframe than is currently acknowledged. The K4C framework will enable greater coordination of current engaged activities, in a way that enables the

university to recognise the longer time horizons necessary to achieve a positive social impact in local communities.

Using the K4C training programme to support the re-purposing of current staff roles will enable the Hub to revise existing curriculum content to build both disciplinary and trans-disciplinary capacity for effective and impactful engagement, by ‘upgrading’ existing programmes with engaged content. The Hub mentors have been engaged with powerfully impactful projects including Comhrá, CWELL and Fleurir.

Read more about this Hub here:

<https://www.unescochair-cbrsr.org/ireland-k4c-hub-limerick/>

Sassari Hub, Italy

Location: Sassari, Italy

University Partner: University of Sassari

Community Partners: FOIST Lab, University of Sassari, IntHum, Intercultural Laboratory for research and Human Promotion (Social Promotion Association), Nuovi Scenari (Social enterprise), Arci Sardegna (Social Promotion Association) and Cospes Salesiani Sardegna (Professional and Social School Orientation Center)

Year of creation: 2018

Hub Coordinator: Ms. Valentina Ghibellini (vale.ghibellini@virgilio.it)

Mentors	Publications	Courses	Research Projects	Trainings/Conferences
2	13	4	3	24

The Hub is based at the FOIST Lab of the University of Sassari which partners with IntHum Social Promotion Association. The FOIST Laboratory for Social Policies and Training Processes, founded in 1977 and long directed by Prof. Alberto Merler is a structure of the Department of Humanities and Social Sciences of the University of Sassari. Since its inception it has been conceived as a place for the generation and sharing of ideas and knowledge, as well as for the promotion of active citizenship.

The Hub’s training is mainly composed of two streams; one is aimed at students in the master’s degree course in Social Services and Social Policies at the University of Sassari. A special curriculum in Social Policies and Community Development has been created. Training is strongly linked to a one-year community-based field work project which is to be addressed through a transdisciplinary approach. A second stream of training is presently being defined to be offered to different types of practitioners (psychologists, educators, social workers, etc.). The main aim is to allow social practitioners to acquire theories and techniques of the CBPR through classroom work, fieldwork and knowledge exchange.

Read more about this Hub here:

<https://www.unescochair-cbrsr.org/italy-k4c-hub/>

Brescia Hub

Location: Brescia, Italy

University Partner: University of Brescia

Community Partner: Ambiente Parco

Year of creation: 2021

Hub Coordinator: Dr. Cristina Guerra (cristina.guerra@ambienteparco.it)

Mentors
3



The Brescia Hub has been part of the K4C Global Consortium since 2021. The Hub mentors conducted some interesting case studies during the MTP on nature-based planning and design approach in urban areas and climate change. The Hub is working on launching a summer CBPR course soon.

Read more about this Hub here:

<https://www.unescochair-cbrsr.org/italy-k4c-hub-brescia/>

UNITE Hub

Location: England

University Partner: Ruskin College

Community Partner: UNITE the Union

Year of creation: 2021

Hub Coordinator: Mr. Adrian Judd (adrian.judd@unitetheunion.org)

Mentors	Course
5	1



UNITE hub is a partnership between UNITE the Union, Britain's biggest labour union, and Ruskin College Oxford. Some of the case studies that the Hub mentors conducted during the MTP included "The experiences of members of the British trade union Unite", "Exploring lived experiences and wellbeing of representatives in Britain's trade union Unite", "Development of an action plan to increase the involvement of young activists in the

delivery of trade union education” and “Women's Participation in Trade Union Activities”. The Hub launched its first course in October 2021.

Read more about this Hub here:

<https://www.unescochair-cbrsr.org/uk-k4c-hub-unite/>

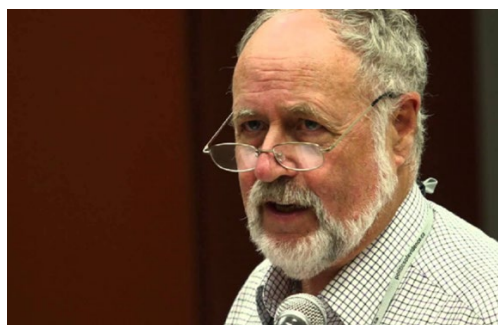
ABOUT THE UNESCO CHAIR

The UNESCO Chair in Community-Based Research and Social Responsibility in Higher Education is based at the University of Victoria (UVic) and the Society for Participatory Research in Asia (PRIA). This Chair is co-directed by Dr. Budd L Hall and Dr. Rajesh Tandon. The UNESCO Chair supports North-South-South and South-South partnerships that build on and enhance the emerging consensus in knowledge democracy. It strengthens recent collaboration between the Higher Education section in UNESCO, the Global University Network for Innovation (GUNI), Global Alliance on Community University Engagement and other regional and global networks. It co-creates new knowledge through partnerships among universities (academics), communities (civil society) and government (policy makers) leading to: new capacities; new solutions to pressing problems related to sustainability, social and economic disparities, cultural exclusion, mistrust and conflict; and awareness among policy makers; enhanced scholarship of engagement; and of social responsibility in Higher Education.

Interested in creating a Knowledge for Change (K4C) Hub where you are living and working, and becoming a part of the K4C Global Consortium? Contact Suriani Dzulkifli, Manager of the K4C Mentor Training Programme, email address: suriani@uvic.ca.

ABOUT THE UNESCO CO-CHAIRS

Dr. Budd Hall



Dr. Budd Hall is a Senior Associate of the Centre for Global Studies, a Professor Emeritus with the School of Public Administration, University of Victoria and Co-Chair of the UNESCO Chair in Community-Based Research and Social Responsibility in Higher Education. He is a scholar and leader whose career achievements especially in the scholarship of adult learning and community engagement have had a transformative impact in addressing societal

challenges that lead to an improved quality of life for all. His research interests lie in community-based participatory research, social responsibility of higher education, knowledge democracy, social movement learning and the UN Sustainable Development Goals.

Dr. Rajesh Tandon



Dr. Rajesh Tandon is an internationally acclaimed leader and practitioner of participatory research and development. He is Founder-President of Participatory Research in Asia (PRIA), global centre for participatory research & training since 1982. He has been appointed Co-Chair of the prestigious UNESCO Chair in Community-Based Research and Social Responsibility in Higher Education with Dr. Budd Hall. A pioneer of participatory research, he has given new meaning to academic research by redefining the relationship between the researcher and the researched.
